



GrabShow 100

**Video Grabber Box
With External USB2.0**

USER'S GUIDE

V1.1

200000700079



CONTENTS

Chapter 1 Introduction	5
1.1 Application	5
1.2 Features	5
1.3 Specification	6
1.4 Minimum System Requirements	6
1.5 Package Checklist	7
Chapter 2 Hardware Installation	8
2.1 Outline Description	8
2.2 Equipment Connection	8
Chapter 3 Software Utilities	10
3.1 Driver Installation	10
3.2 Power Director	11
3.2.1 Features	11
3.2.2 System Requirements	12
3.2.3 Supported File Formats	13
3.2.4 PowerDirector Workspace	14
3.2.5 Working with Playback Files	16
3.3 Video View	17
Chapter 4 Volume Control	20
Chapter 5 Trouble Shooting	21

FCC NOTICE

This equipment has been tested and found to comply with the limits of a Class B digital device, pursuant to Part 15 of the FCC Rules. These limits are designed to provide reasonable protection against harmful interference in a residential installation. This equipment generates, uses and can radiate radio frequency energy and, if not installed and used in accordance with the instructions, may cause harmful interference to radio communications. However, there is no guarantee that interference will not occur in particular installations. If this equipment does cause harmful interference to radio or television reception, which can be determined by turning the equipment off and on, the user is encouraged to try to correct the interference by one or more of following measures:

1. Reorient or relocate the receiving antenna.
2. Increase the separation between the equipment and receiver.
3. Connect the equipment into an outlet on a circuit different from what the receiver is connected.
4. Consult the dealer or an experienced radio TV technician for help.

CAUTIONS:

1. The change or modifications not expressly approved by the party responsible for compliance could void the user's authority to operate the equipment.
2. Shielded interface cables and AC power adapter, if any, must used in order to comply with the emission limits.

Chapter 1 Introduction

Do you feel the capacity of equipments deployment is always not enough? Don't worry. GrabShow 100 will give you more capacity.

GrabShow 100 is an external USB 2.0 video grabber box. Through the connection of USB 1.1/2.0 port, you can transfer image from VCD/DVD/VCR/camcorder player or relative devices to PC truly and promptly without any distortion. It provides full video resolution (720x480 30fps for NTSC, or 720x576 25fps for PAL) recordings. Besides, it is easy to be connected to any devices with composite and S-video output ports of VCR, camcorder, video game and other video sources.

With the software utilities, GrabShow 100 can show you the true video/audio on your PC. Even you can adjust or control the playbacks on your PC monitor through the included software application programs. In conclusion, GrabShow 100 let you have powerful video applications.

1.1 Applications

- Video recording and editing
- Video conference or email
- Still image capture for photo album
- Video monitoring for surveillance system
- Video display on desktop or laptop's screen for video games

1.2 Features

- Full Video resolution capture capability
 - USB 2.0: 720x480, 30fps for NTSC, 720x576 25fps for PAL
 - USB 1.1: 320x240 30fps for NTSC, 320x288 25fps for PAL
- Supports NTSC, PAL and SECAM video system
- Supports USB 1.1 and 2.0, transfer rates up to 480Mbit/s
- Supports S-video and composite video input
- Supports brightness, contrast, saturation, hue and sharpness control
- Power supply from USB
- Software drivers are fully compatible with Microsoft's DirectShow

User's Guide

- Supports software audio/video codec for MPEG 1 and MPEG 2 to create VCD or DVD movies
- Powerful video editing function include Motion Video Special Effects/ Title Effects/ Picture-in-Picture Effects/ Slow & Fast Motion Video Effects/ background music/ color background/ Transitional Effects
- Plug and Play
- System supported: Windows 98SE, ME, 2000 and XP

1.3 Specification

- Video input: 1 s-video input and RCA type composite video input
- Video system supported: NTSC, PAL and SECAM
- Audio go through line in of sound card
- Video Motion capture : AVI format from 160x120 to 720x576 resolution
MPG format from 320x240 to 720x576 resolution
- Video Performance : Up to 25 fps at 720x576 for PAL, 30fps at 720x480 for NTSC
- MPEG bit rate adjustment from 192Kbps to 10000Kbps
- Power Consumption : 5VDC,250mA(max) through USB port
- 2 LEDs for Power and link status indicator
- Dimension: 81mm X 56mm X 31mm

1.4 Minimum System Requirements

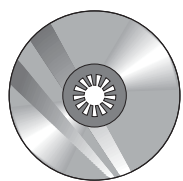
- PC with USB 2.0 port
- Pentium III 500 or above and 128MB of RAM
- Windows 98SE/ME/2000/XP
- Sound card

1.5 Package Checklist

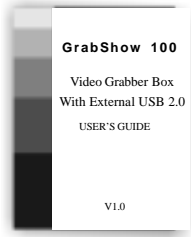
Check and identify the supplied items as below before operating this machine. If finding any shortage or damage, please contact your dealer as soon as possible.



GrabShow 100
Device



Software Utility



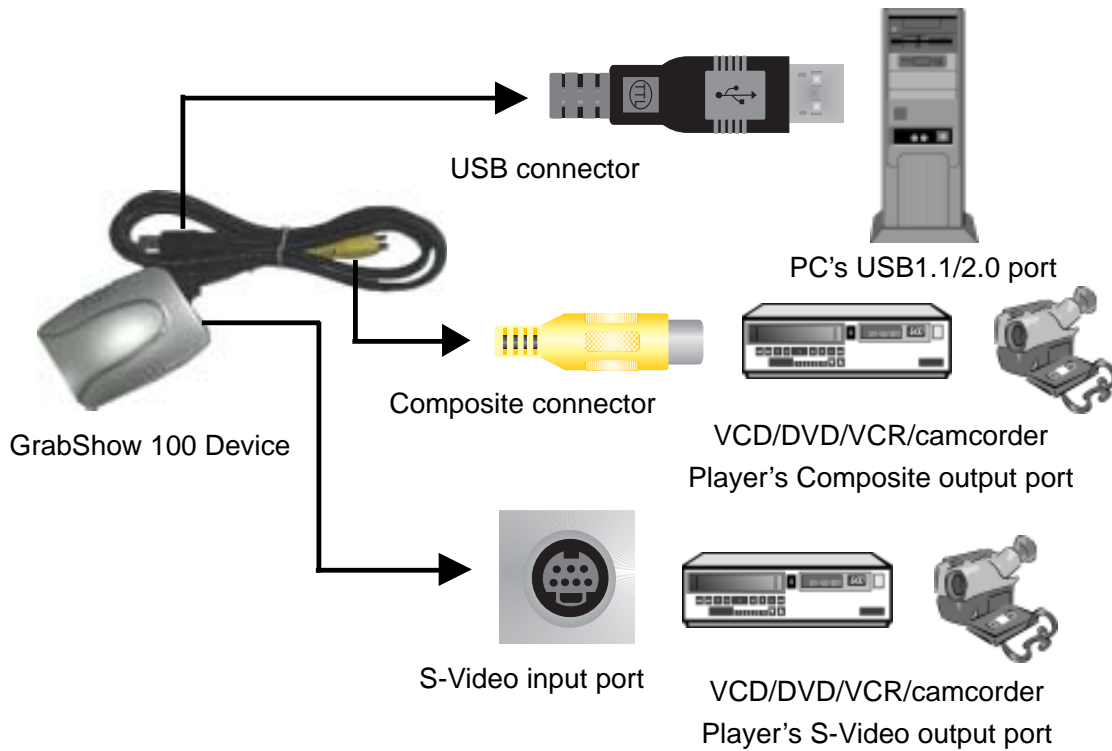
User's Guide



Chapter 2 Hardware Installation

Please follow the steps as below to prepare everything before the installation, these steps will help you get everything ready and enjoy the unique GrabShow 100:

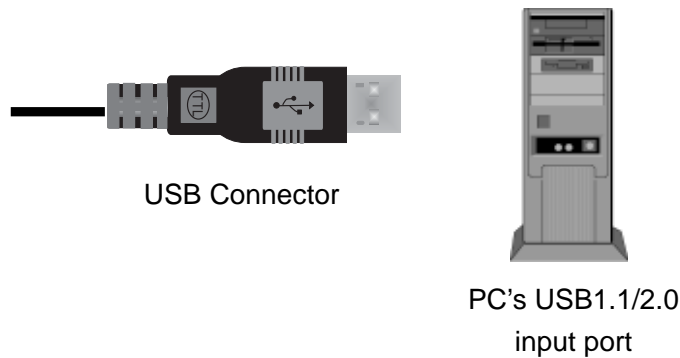
2.1 Outline Description



2.2 Equipment Connection

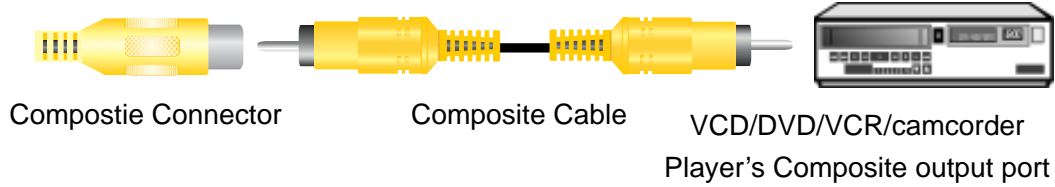
Please follow the step-by-step process as below to complete the connection between GrabShow 100 device and peripherals:

- (1) Connect Grabshow 100 Device's USB connector to PC's USB input port.

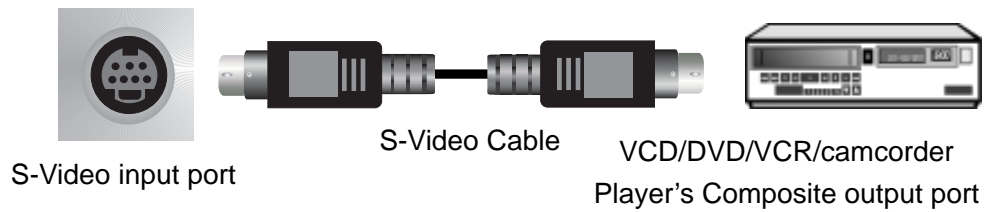


..... **User's Guide**

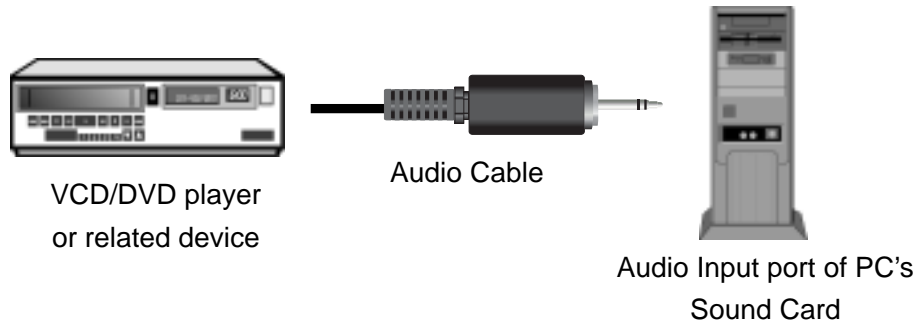
(2) Connect GrabShow 100 Device's composite Connector through composite cable to VCD/DVD/VCR/camcorder Player's composite output port.



(3) If your VCD/DVD player or related device has the S-Video output port, you can also connect the GrabShow 100 with a S-Video cable.



(4) For audio function, you just connect the audio cable of VCD/DVD player or related device to the audio input port of your PC's sound card directly.



GrabShow 100 does not support the audio switches, you just connect the audio cable of related device to the audio input port of your PC's sound card directly so that you can enjoy the audio function.

Chapter 3 Software Utilities

After the hardware connection, you have to install the GrabShow 100 driver so that you can configure the system of GrabShow 100. Please follow the steps as below to finish the installation of GrabShow 100 Driver.

3.1 Driver Installation

- (1) Please insert the driver CD into the CD_ROM drive.
- (2) The autorun screen will appear and please follow the instructions on your screen to continue the installation.
- (3) Restart your PC and reboot the system. (After you reboot the system, please connect the GrabShow 100 device's USB connector to PC's USB input port.)
- (4) On the desktop of your screen, please select **Start/Control/System**, the **System Properties** setting box will appear.
- (5) To check whether the **USB 2800 Video** is installed completely.
- (6) If the text of the **USB 2800 Video** is not shown in the **System Properties** setting box, it means your GrabShow 100 is not installed completely. You have to reinstall the driver.

3.2 PowerDirector

PowerDirector is a full function movie software utility that you can direct and control your own movie. Just because of the PowerDirector's Smart Video Rendering Technology (SVRT), it does not need additional compression or decompression when producing scenes with MPEG or DV AVI formats. It can produce scenes quickly and then be output for direct viewing on the PC or the Web, or they can be conveniently Authored and Burned onto CD or DVD via the Disc Making Wizard.

3.2.1 Features

- Convenient Hot Key Commands
- Color Board and Color Adjustment
- Gridline and TV Safe Zone
- Resizeable Video Preview Player
- Import, Capture and Edit from anywhere
- Instant MPEG for Superior Video Quality
- Easy to Use Storyboard Interface
- Advanced Scene Detection Technology
- Trim Mode with Split Video Function
- Motion Video Special and Slow/Fast Motion Video Effects
- Smart Video Rendering Technology (SVRT)
- Audio, Dazzling Title and Dynamic Transition Effects
- Picture-in-Picture (PiP)
- Various Output Formats
- Author, burn and playback
- Disc Making Wizard
- Step Link for Easy Navigation
- Set-up Movie Chapters
- Add Interactive Menus
- Unique Designer Menu Templates
- Photo Slide Shows
- Preview Mode

User's Guide

- Create DVD or CD Movies
- Supports Major Recordable Formats
- View Movies on the PC or TV
- DVD Auto-Run Program

3.2.2 System Requirements

- Windows 98SE, ME, 2000, XP
- Pentium II 450 or above
- 200MB of free hard drive disk (HDD) capacity
- Video capture devices (optional)
 - Capture cards (PCI, USB, FireWire or other FireWire formats)
 - DV camcorder or DV VCR
 - Analog camcorders or VCRs in 8mm, Hi8, VHS, VHS-C or Beta formats
 - Digital camera
 - PC camera
- Playback
 - Internet streaming: Pentium II 266 with MMX Technology, Microsoft Windows Media Player 7.0, IE 5.0
 - Desktop Slide Show: Pentium II 266 with MMX Technology

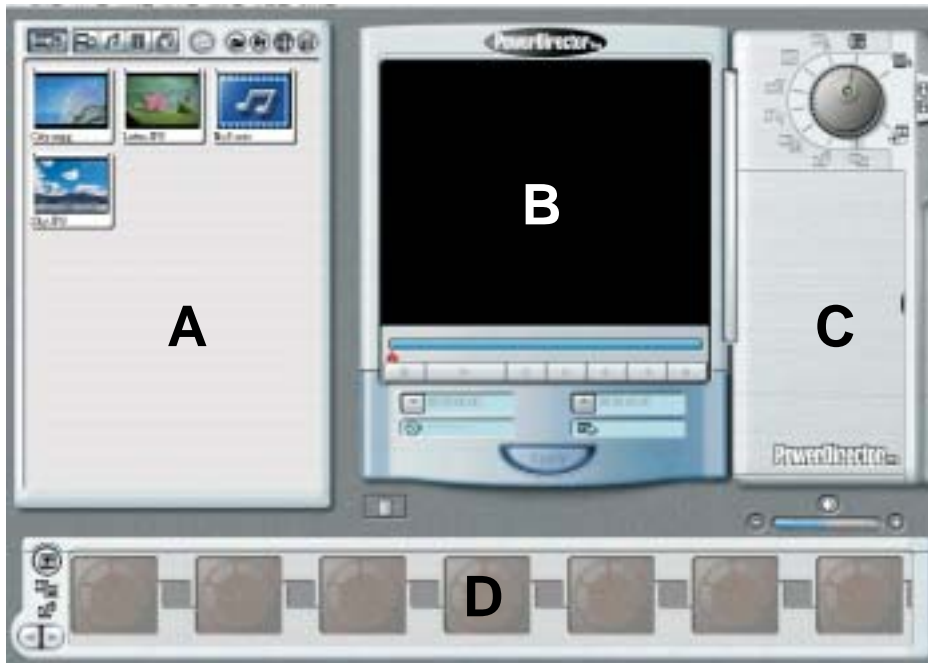
3.2.3 Supported File Formats

PowerDirector support the formats as below for input and output:

Media Type	Input	Output
Image	BMP GIF JPG TIF	BMP GIF JPG
Video	Windows AVI DV AVI MPEG-1 MPEG-2	Windows AVI DV AVI MPEG-1 MPEG-2 RealVideo QuickTime WMV

3.2.4 PowerDirector Workspace

🔗 *For more information, please refer to read me or user's guide of the CD included, this chapter just only for a sketch of the PowerDirector.*



A. Library: Contains raw media files for use in the **Storyboard** (part of D letter).



Show All Media: Shows all media files in Library



Show Video: Shows all video files in Library



Show Audio: Shows all audio files in Library



Show Images: Shows all image files in Library



Show Color Boards: Shows colored backgrounds in the Library



Detect Scenes: Detects scenes for a selected file in the Library



Import Media: Imports media files



Import Directory: Imports all media files in a directory



Thumbnails: Displays Library media files as thumbnails














Details: Displays Library media files with file details

..... **User's Guide**





B. Preview Window: Allows you to preview media clips, transitions and special effects.

- Stop: Stops playing file
- ▶ Play/Pause: Plays/Pauses file
- ⏪ Start: Jumps to start of file
- ▶ End: Jumps to end of file
- ◀ Previous Frame: Moves to previous frame
- ▶ Next Frame: Moves to next frame
- Record: Records file (if applicable depending on mode)
Apply: Applies clip to Storyboard (if applicable)

C. Modes Wheel: Switches between editing modes.

- | | | | |
|---|--------------|---|-------------------------------|
|  | Preview Mode |  | Picture-in-Picture (PiP) Mode |
|  | Trim Mode |  | Audio Mode |
|  | Speed Mode |  | Transitions Mode |
|  | Titles Mode |  | Capture Mode |
|  | Effects Mode |  | Produce Movie |
|  | Disc Wizard | | |

D. Storyboard: Contains finalized media clips, transitions, effects and user settings that combine to create a movie.

-  Play Movie: Plays your movie (preview before producing)
-  Master Watermark: Activates Master Watermark mode
-  Master Audio: Activates Master Audio mode
-  Scroll Left/Right: Scrolls Storyboard left/right

3.2.5 Working with Playback Files

If you want to record the playing film, just click the **Record** button in the **Preview Window** portion. When you want to stop the recording, please click the **stop** button. After you click the stop button to end the film recording, a **Captured File Name** dialog box will appear. Please key in the file name and click **OK** button to save the film as an .mpg file.



Key in the file name you want to save.

Click the **Record** button to record the film you want.

Click the **Stop** button to end the film recording.

When you finish the film recording, the **Storyboard** will also show you the files you have recorded. In the **Storyboard**, Double click the file you want to play. Then, the file you select will be shown on the **Preview Window**, click the **Play** button to play the recording file.



Double click the file you want to play.



Click **Play** button to play the recording file.

3.3 Video View

Select **Start/Program/GrabShow 100/Video View** on the desktop bar to open up the **Video View** screen.

File: You can **Save the Capture File, Save Captured Video As** and **Exit (close)** the Video View function in this item.

Devices: This item will show you the Video and Audio devices with capture function in your PC.

Options:

a. Preview: If you want to play the video, you have to select this item otherwise the video will stop playing.

b. Audio Capture Filter: You can configure the Master Input Mix, Pin Line Input Mix and Pin Line in this item as Figure - 1.

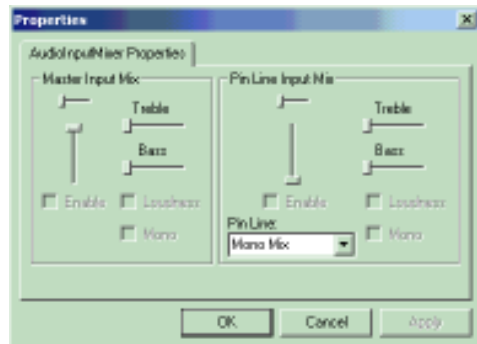


Figure - 1

c. Video Capture Filter:

Video Decoder tab will show you the Video Standard you use, signal detected and lines detected information.



Figure - 2

Video Proc Amp tab will allow you to adjust the Video's brightness, contrast, hue, saturation, sharpness and so on. If you want to restore the default value, please click the **Default** button.

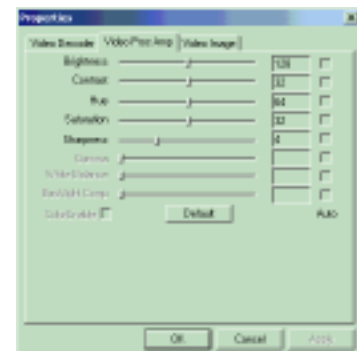


Figure - 3

User's Guide

Video Image tab is aimed at the adjustment of the video image revise.



Figure - 4

d. Video Capture Pin: This setting box will show you the video standard, frame rate, color space, compression and output size information.

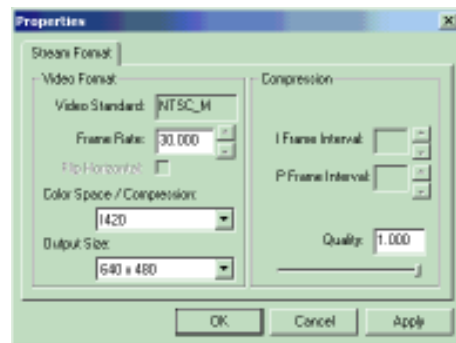


Figure - 5

e. Video Crossbar: This setting box will show you the video input and output format information.

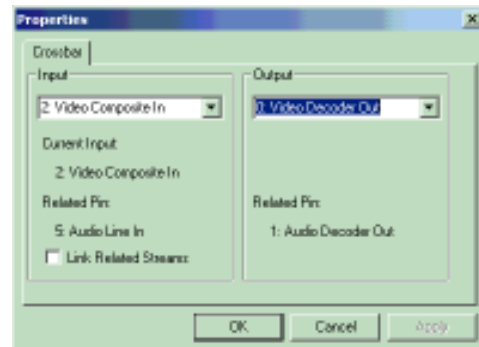


Figure - 6

f. Video Input: To select Video Input format including Composite and S-Video items.

..... User's Guide

Capture:

- a. **Start Capture:** To record the video and the file will be saved as .AVI file.
- b. **Stop Capture:** To stop the video recording.
- c. **Master Stream:** There are None, Audio and Video items for you to select from.
- d. **Set Frame Rate:** You can set the frame rate in this item as Figure - 7.

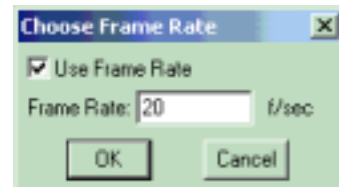


Figure - 7

- e. **Set Time Limit:** This item allows you to set the time limit of recording as Figure - 8.

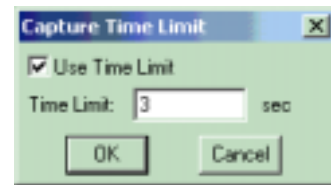


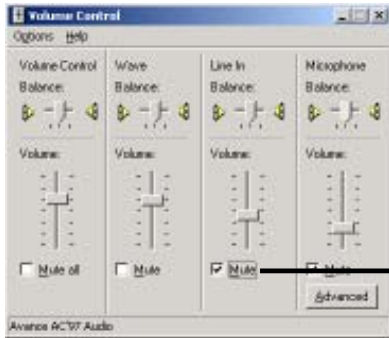
Figure - 8

Screen:

- Full Screen:** Select this item to display the full screen and type any key of your keyboard or double-click the left of your mouse to restore normal mode.
- Capture Single Frame:** Capture a picture as .bmp file and save it to the default location according to the resolution you set.
- Set Capture Single Frame Destination:** Select this item to change the location where you want to save the captured picture.

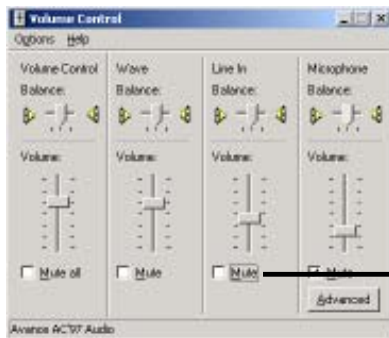
Chapter 4 Volume Control

About the **Volume Control**, please click the right of your mouse on the **Volume** icon located at the lower right corner of the screen. Then, select **Open Volume Control** item to open the **Volume Control** adjusting box as below.



The default value for Volume Control is mute.

If you want to enjoy the audio function, you have to open the Line in voice function as below. For the Line in voice item of Volume Control adjusting box, don't select the Mute check box.



Don't select this Mute check box.

Chapter 5 Trouble Shooting

Problem 1: No display on your monitor.

Solution: Make sure that all cables are connected properly.

Problem 2: Black screen.

Solution: Try another input channel.

Problem 3: No sound.

Solution: Maybe sound is muted. Try to open Volume Control adjusting box to restore sound.

Problem 4: For USB 2.0 interface.

Solution: The driver included supports USB 2.0 interface with OWC format. If your USB 2.0 interface's chipset is NEC and it doesn't support OWC format. You have to download the new driver with OWC from the related website.