

hama®

W I R E L E S S L A N

WLAN USB Stick 150 Mbps »Mini«

Ⓒ Instruction manual



00053331

Table of Contents

Introduction	3	Configuration	15
Foreword	3	Starting the configuration program	15
Information on this instruction manual	3	Description of the	
Copyright	3	configuration program	16
Warnings	4	Detail view "General"	18
Intended use	4	Detail view "Profile"	19
Liability disclaimer	4	Configuring a profile	20
Safety precautions	5	Detail view "Available networks"	22
Disposal	5	Detail view "Status"	23
		Detail view "Statistics"	23
		Detail view "Wi-Fi Protected Setup"	24
Description	6	Making a WiFi connection	26
Scope of supply	6	Connecting using the "Hama	
Device elements	6	Wireless LAN Utility"	26
Preconditions for operation	7	Deinstallation	28
Function LED	7	Troubleshooting	28
Fitting the cap	7	Support and contact information	30
Installation	8	For defective products	30
Installing driver and		Internet/World Wide Web	30
configuration software	9	Support hotline – Hama product	
Connecting/disconnecting the device	14	support	30
Inserting the USB WLAN stick	14	Technical data	31
Removing the USB WLAN stick	14	Notes on EC Declaration of	
		Conformity	31
		Operation restrictions	31

Introduction

Foreword

Dear Customer,

By purchasing this device, you have decided in favour of a quality product from **Hama** which corresponds to the latest state of development with respect to technology and functional performance.

Please read the information contained in this booklet to familiarise yourself quickly with the unit and to be able to make full use of its functions.

We wish you a lot of pleasure with the unit.

Information on this instruction manual

This instruction manual forms an integral part of the WLAN USB Stick and contains important information on the intended use, safety and connection of the device and on the configuration of the software.

Keep this instruction manual in a safe place and pass it on with the device to any future owners.

Copyright

This documentation and the enclosed software are protected by copyright.

Any duplication or reprinting of this documentation, in whole or in part, and the reproduction of the illustrations even in modified form is permitted only with the written approval of the manufacturer.

Hama grants the buyer the non-exclusive right to use the enclosed software for the operation of the device. The Licensee may make only one copy of the software that may be used exclusively for backup purposes.

Unless otherwise specifically indicated, all trademarks and logos mentioned are trademarks of Hama GmbH that are protected by law. Microsoft, Windows and the Windows logo are trademarks of Microsoft Corporation. All other product and company names are trademarks of the respective holder.

Warnings

The following warnings are used in the present instruction manual:

CAUTION

A warning of this type draws attention to potential material damage.

If the situation is not avoided, it may lead to material damage.

▶ Follow the instructions in this warning to avoid material damage.

NOTE

▶ A note draws attention to additional information that simplifies the use of the appliance.

Intended use

This device is intended only for establishing a data connection from a computer using the enclosed software via a WLAN (WiFi network) using a WLAN router or via some other WLAN-compatible device. Use in any other or further way is not considered an intended use.

No claims of any kind will be accepted for damage or injury resulting from use of the unit for other than its intended purpose. The risk has to be borne solely by the unit's owner.

Liability disclaimer

All technical information, data and instructions for the operation contained in this operating manual are in conformity with the last status prior to printing and shall be rendered on the basis of our previous experience and knowledge to the best of our belief.

The manufacturer assumes no liability for damage or injury resulting from failure to observe the instruction manual, use for other than the intended purpose, unprofessional repairs, unauthorised modifications or use of non-approved spare parts.

Safety precautions

Observe the following safety precautions when using the device to avoid any damage or injuries:

- Do not allow children to play with the appliance. The device and the accessories could be swallowed by children.
- Inspect the unit for visible signs of damage before use. Do not use a damaged unit.
- Do not open the device. Unauthorised opening and unqualified repairs can pose considerable dangers for the user of the appliance. Have repairs to the device carried out only by qualified persons. Unqualified repairs will void the warranty.
- Protect the device against moisture and the ingress of liquids.
- Clean the housing of the device with a slightly dampened cloth. Do not use any aggressive or abrasive cleaning agents or solvents.

Disposal

CAUTION

By no means throw the device into the normal domestic waste. Observe the disposal instructions in the Annex to the manual.



The return of the packaging to the material cycle helps conserve raw materials and reduces the production of waste. When no longer required, dispose of the packaging materials in accordance with the local regulations in force.

NOTE

- ▶ Keep the original packaging during the warranty period in order to be able to pack the device properly in the event of a warranty claim.

Description

This device is a WLAN (WiFi) network adapter for the Universal Serial Bus (USB) with high data transmission rate and particularly compact dimensions.

The device allows you to connect your computer directly to a WLAN access point or WLAN router. You can also connect your computer to other WLAN devices. This means mobility when working with all the benefits of wireless connections, high transmission speed and high-speed connections with maximum operational security.

Scope of supply

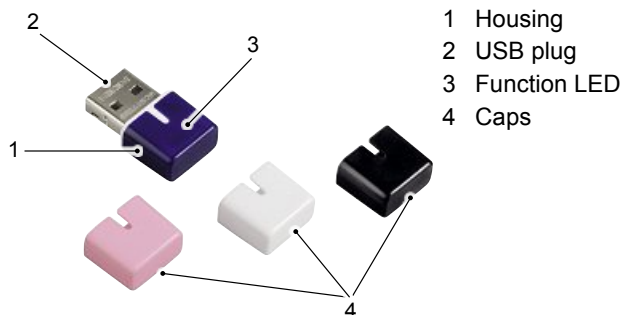
The device is supplied as standard with the following components:

- WLAN USB stick
- 4 coloured caps (white, pink, blue and black)
- Installation CD-ROM
- Printed quick-start guide

NOTE

- Inspect the content of the package for completeness and obvious signs of damage. Report an incomplete or damaged delivery to your supplier/dealer immediately.

Device elements



Preconditions for operation

The following preconditions must be satisfied for the installation and operation of the device on your computer:

- A free USB port on the computer.

NOTE

- ▶ A USB 2.0 port is recommended, USB 1.1 functions with a reduced data rate.

- A computer with installed operating system:
 - Microsoft® Windows 7 (32-bit or 64-bit edition),
 - Microsoft® Windows Vista (32-bit or 64-bit edition),
 - Windows XP® (32-bit or 64-bit edition)
(Service Pack 2 or higher recommended).
- Pentium-class computer or laptop (500 MHz CPU or better).
- Minimum 256 MB RAM and 50 MB free hard disk memory.
- A CD drive.

NOTE

- ▶ If you wish to connect further computers to the WLAN, you need additional WLAN USB sticks.

Function LED

The function LED installed in the device flashes during access to the network.

Fitting the cap

The scope of supply of the device includes 4 caps with which the device can be matched to the colour of your computer/laptop.

- ◆ Push the cap with the colour matching your computer/laptop over the housing of the device.

Installation

To install the WLAN USB stick on your computer, the following steps must be carried out in the order indicated:

- 1) Install the driver and the configuration software using the installation program on the CD supplied with the device.
- 2) Reboot the computer.
- 3) Insert the WLAN USB stick.
- 4) Configure the device.

NOTE

Before you start the installation, observe the following tips:

- ▶ Use a USB 2.0 port for the optimum performance of the device.
- ▶ Save the data of your opened applications and close all running application programs.
- ▶ If you already have another version of the drivers and configuration software installed on the computer, uninstall these first.

Installing driver and configuration software

The installation of the driver and the configuration software for the operating systems Windows XP, Windows Vista and Windows 7 is described here.

NOTE

- ▶ The installation is practically identical with all the above operating systems. The differences are explained in separate notes.
- ▶ The display of the menus and folders can be changed in the different operating systems. The following illustrations relate to the delivery condition of the respective operating system.

- ◆ Place the program and driver CD supplied into the CD drive of your computers. The installation program is started automatically.

NOTE

- ▶ If you have deactivated the AutoPlay function and the installation program is not started automatically, start the installation program by double-clicking the file "autorun.exe" in the main directory on the CD.

WINDOWS VISTA/WINDOWS 7

- ▶ Under Windows Vista and Windows 7, the execution of the "autorun.exe" program has to be confirmed manually. Click the symbol "Execute autorun.exe".

The "Welcome" window of the installation program is displayed.



- A - Select language German, English, French
- B - Other languages
- C - Exit program

- ◆ Select your preferred language for the installation by clicking one of the displayed languages (A). For further installation languages, click button (B).
- ◆ If you wish to abort the installation, click the button "Exit / Beenden / Terminer" (C).

NOTE

► The following examples are based on the language selection "German".

The main menu of the installation program is displayed.



- A – Start installation
- B – Display the instruction manual
- C – Search for updated drivers
- D – Install Adobe Reader
- E – Back to the "Welcome" page

- ◆ Click button (A) to start the installation.
- ◆ Click button (B) to display this instruction manual in PDF format.

NOTE

- ▶ You need the Adobe Reader to display the instruction manual in PDF format. If the Adobe Reader is not already installed on your computer, you can install the free reader on the CD. Click the button (D).

- ◆ Click button (C) to download the latest drivers from the Hama website.
- ◆ Click button (E) to return to the "Welcome" page.

After the start of the installation, the InstallShield Wizard is loaded.

NOTE

- ▶ The loading of the InstallShield Wizard can take a few seconds. Please wait until the InstallShield Wizard has started.

WINDOWS VISTA/WINDOWS 7

- ▶ Under Windows Vista and Windows 7, click "Continue" in the dialog "User account control".

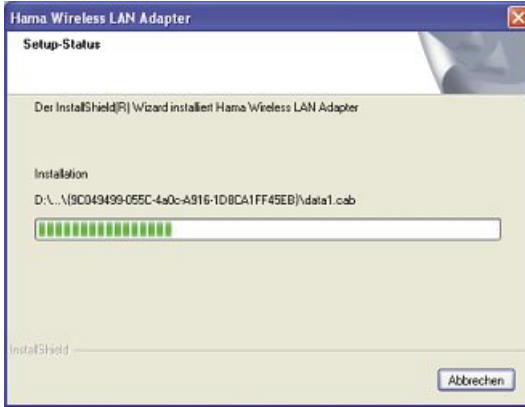


- ◆ Click the button "Continue".



- ◆ Click the button "Install" to start the Installation.

The installation files are now unpacked for the installation.



The drivers and the configuration software are installed on your computer.



NOTE

- Several components are installed here, depending on the operating system.

After completion of the installation, the computer must be started again.



- ◆ Click the button "Finish" to terminate the installation and restart the computer.

Connecting/disconnecting the device

Inserting the USB WLAN stick

- ◆ Plug the WLAN USB stick into a free USB port of the started computer or of the connected USB hub.



CAUTION

Do not try to push the WLAN USB stick into the port with force. The USB port of your computer could be damaged.

- ▶ Check whether the USB stick fits the other way round.

Removing the USB WLAN stick

- ◆ After shutting down the computer, pull the USB WLAN stick out of the USB port of the computer.

CAUTION

Possible data loss when writing to a network drive.

If the WLAN USB stick is removed during a data transfer, data may be lost when writing data to the network drive.

- ▶ Close all open programs to ensure that all application data have been saved.
- ▶ Shut down the computer correctly before removing the USB WLAN stick.

Configuration

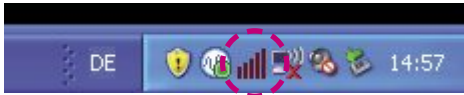
Starting the configuration program

The "Hama Wireless LAN Utility" configuration program can be called up in a number of ways:

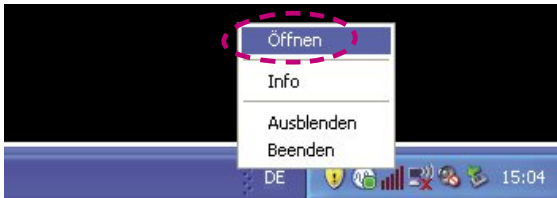
- Start the program with *Start -> Programs -> Hama Wireless LAN -> Hama Wireless LAN Utility*
- Start the program by double-clicking the desktop icon "Hama Wireless LAN Utility".



- Start the program by double-clicking the circled symbol in the taskbar shown below.

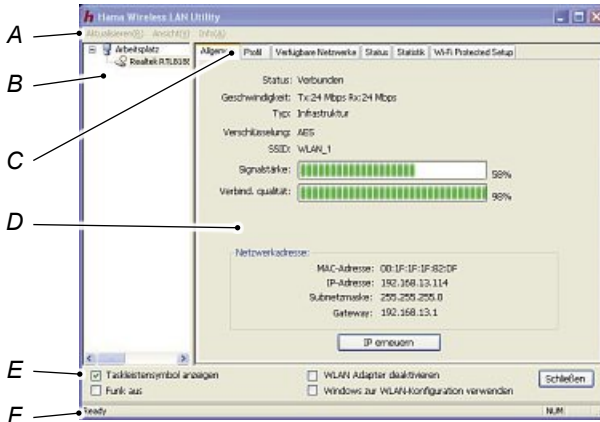


- Start the program by right-clicking the symbol in the taskbar shown below and select the menu item "Open" from the context menu.



Description of the configuration program

The program parts of the "Hama Wireless LAN Utility" configuration program are described below:



- A – Menu bar
- B – List of network adapters
- C – View selection
- D – Detail view
- E – Shortcuts
- F – Status bar

- The following menu items are available in the menu bar (A):

Refresh(R)	Determines the current status and refreshes the view of the program.
View(V)	The status bar (F) can be displayed and hidden here.
Info(A)	Displays program information and the current version number.

- The list of network adapters (B) shows you the network adapters supported by this program. All inputs relate to the network adapter selected in this window.

- With the view selection (C) you can switch back and forth between the individual detail views. The following can be selected:

General	Displays the current status of the network adapter and the connection.
Profile	Used to manage connection profiles.
Available networks	Displays the available WiFi networks.
Status	Displays detailed status information.
Statistics	Displays the transmission and reception statistics.
Wi-Fi Protected Setup (WPS)	Used for quick connection to WPS-compatible routers or access points.

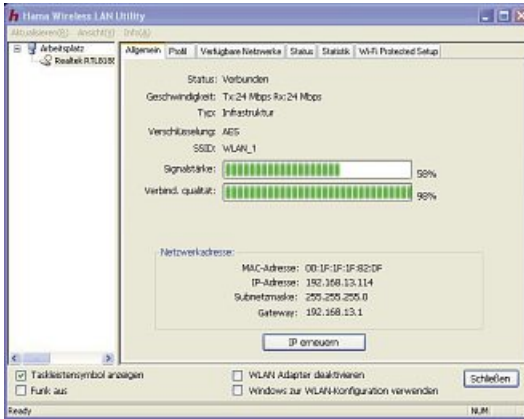
- The detail view (D) provides important information and you can make the corresponding selections and settings.
- The shortcuts (E) allow you to execute important functions immediately, irrespective of the selected detail view. The following functions can be selected:

Display taskbar symbol	Activates or deactivates the symbol in the taskbar.
Wireless off	Switches off the device's transmitter/receiver.
Deactivate WLAN adapter	Deactivates the selected network adapter.
Use Windows for WLAN configuration	Defines whether the configuration of the network adapter should be performed with the Windows functions and not using this program.
Close	Closes and minimises the program interface.

- Additional information is displayed in the status line (F).

Detail view "General"

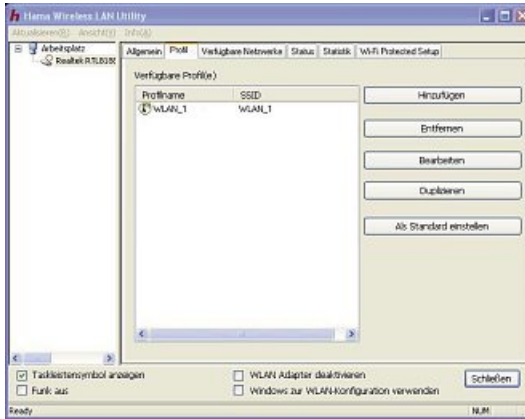
The detail view "General" displays the current status of the network adapter and the connection.



Status:	Displays the connection status of the network adapter.
Speed:	Displays the current speed of the connection in Mbps. Tx is the transmission speed; Rx the reception speed.
Type:	Type of network connection: Infrastructure for connection to a router/access point IBSS for direct connections to another WLAN-compatible device (ad hoc).
Encryption:	Displays the currently selected encryption for the data transfer. The following can be selected: None, WEP, TKIP and AES.
SSID:	The unique network name of the currently connected network. The name can be up to 32 characters long.
Signal strength:	Displays the current signal strength of the connection.
Connect. quality:	Displays the connection quality.
Network address:	Data of the currently assigned network address are displayed here.
Renew IP:	Click this button to renew the network address.

Detail view "Profile"

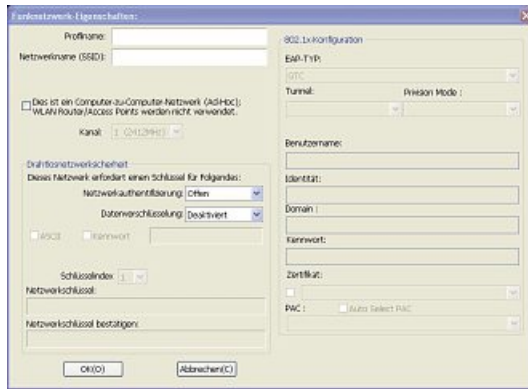
Connection profiles can be created and managed in the detail view "Profile".



Available profile(s)	Displays the list of profiles already created.
Add	This button allows a new profile to be added.
Delete	Deletes the selected profile.
Edit	The settings of the selected profile can be edited.
Duplicate	Creates a copy of the selected profile for easier creation of a new profile.
Select as standard	Defines the selected profile as the standard profile. When the program is started, the connection is set up with this profile.

Configuring a profile

When adding a new profile or editing an existing profile, a new window opens in which the settings for the profile can be made.

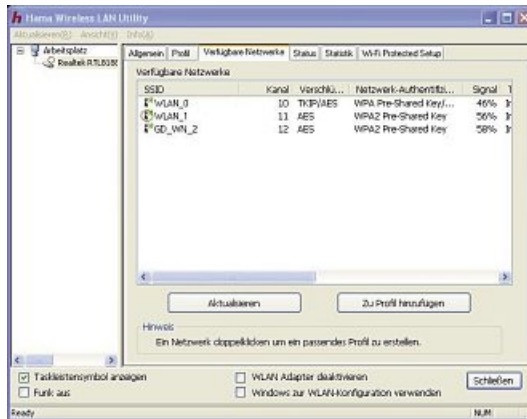


Profile name:	Name of the profile for easier identification. For example: "Office" or "Home".
Network name (SSID):	The unique network name as it is displayed in the list of available networks.
This is a computer-to-computer network (ad-hoc):	If this checkbox is activated, the connection is made to another WLAN-compatible device and not to a router or access point.
Channel:	This selection is only available for an ad-hoc network. A fixed channel number between 1 and 13 must be set for the connection.
Network authentication:	The network authentication must match the settings for the network to which the connection is to be made. The following can be selected: Open, Shared, WPA-PSK, WPA2-PSK, WPA 802.1x, WPA2 802.1x and WEP 802.1x.
Data encryption:	The data encryption must match the settings for the network to which the connection is to be made. The following can be selected: Deactivated, WEP, AES and TKIP.

ASCII	Activate this checkbox if the WEP code is in ASCII format.
Password	Activate this checkbox if the WEP code is a PASS PHRASE.
Code length:	If the WEP code is a PASS PHRASE, you have to enter the code length here. Select 64-bit encryption or 128-bit encryption.
Code index:	Enter the code index 1-4 for the WEP encryption here.
Network code:	Enter the network code for the WPA-PSK authentication here that you received from your network administrator.
Confirm network code:	Enter the network code again here that you received from your network administrator for confirmation.

Detail view "Available networks"

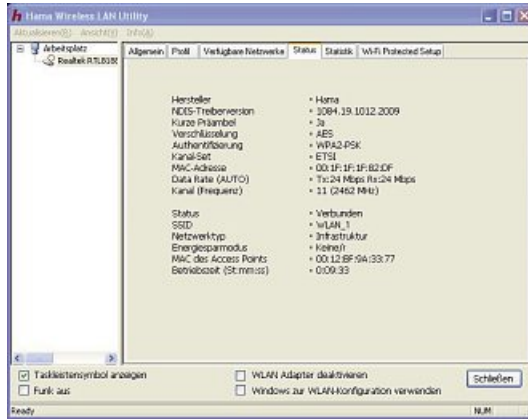
The detail view "Available networks" displays the networks detected within the reception range of the network adapter.



Available networks	Displays the list of available networks with their properties. Double-clicking a particular network opens the window for configuration of a new profile.
Refresh	Refreshes the display of the available networks.
Add to profile	Opens the window for configuration of a new profile and copies the known values of the selected network directly to the profile.

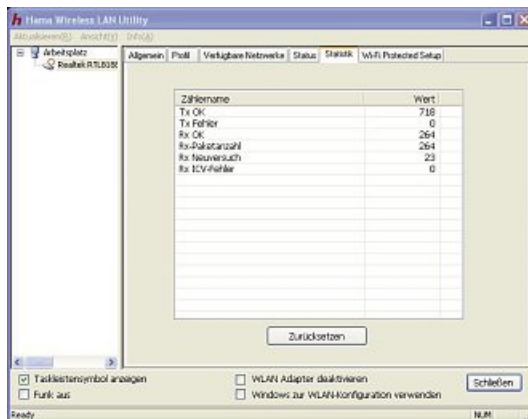
Detail view "Status"

The detail view "Status" shows details of the current status of the network adapter and the connection made.



Detail view "Statistics"

The detail view "Statistics" shows details of the transmission and reception statistics.



Reset

Resets all counters to zero.

Detail view "Wi-Fi Protected Setup"

The detail view "Wi-Fi Protected Setup (WPS)" allows quick connection to routers or access points that support the rapid setup of connections using the WPS function.



Two methods of establishing a connection are supported:

- PIN method
- Press button configuration method

PIN method (PIN)

With the PIN method, the eight-digit PIN code shown in blue has to be entered in the WPS configuration of the routers or access point.

- ◆ Start the PIN method by clicking the button "PIN method (PIN)".
- ◆ In the subsequent query for the selection of a given router, click "No".
- ◆ Enter the eight-digit PIN code during the WPS configuration of the router or access point.

The connection is automatically set up as soon as a router or access point with the entered PIN code is found.

NOTE

- ▶ If the name of the router or access point is known, it can be preselected from the list of WPS-compatible devices.
- ▶ Consult the documentation on your WPS-compatible router or access points to find out how the PIN code is to be entered.

Press button configuration method (PBC)

With the press button configuration method you have to have access to the router or access point because you have to press the PBC button there after starting the search.

- ◆ Start the press button configuration by clicking the button "Press button configuration (PBC)".
- ◆ Press the PBC button on the router or access point.

The connection is automatically set up as soon as the corresponding router or access point is found.

NOTE

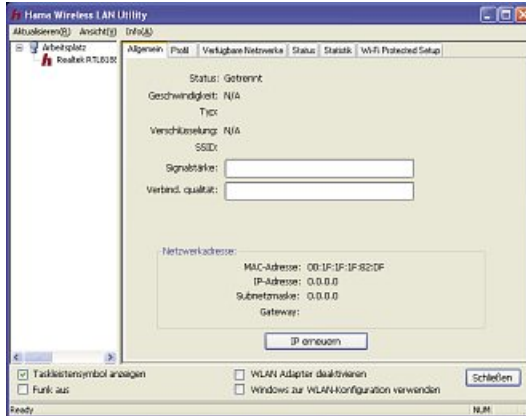
- ▶ The search for the router or access point can take up to a minute.
- ▶ Consult the documentation on your WPS-compatible router or access points to find out where the PBC button is located.

Making a WiFi connection

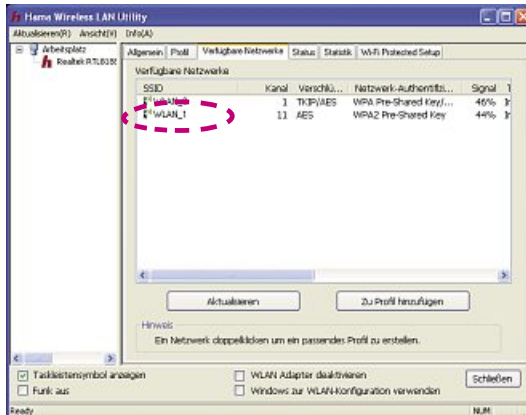
Connecting using the "Hama Wireless LAN Utility"

Proceed as follows to make a connection to a WiFi network:

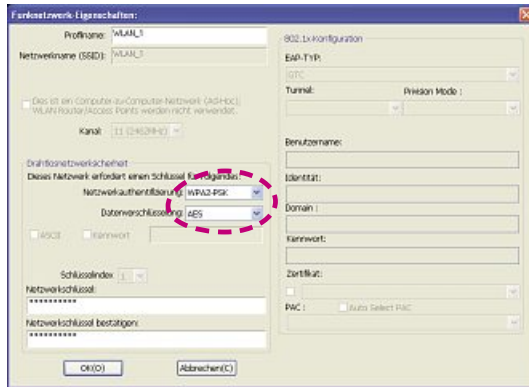
- ◆ Start the "Hama Wireless LAN Utility" configuration program.
- ◆ Click the view "Available networks" at the upper edge of the window.



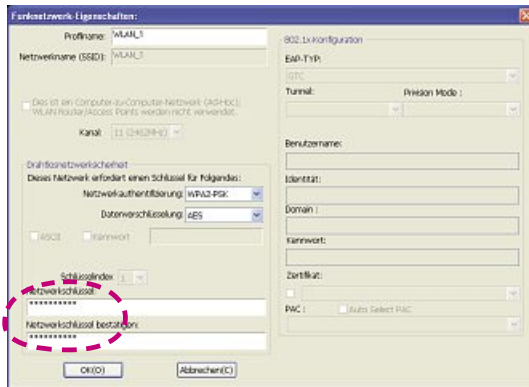
- ◆ Double-click the network with which you wish to make a connection.



- ◆ Enter the network authentication and the type of data encryption for the network. Ask the person who set up the wireless LAN for these data.



- ◆ Enter the network code for the network. Ask the person who set up the wireless LAN for these data.



- ◆ Confirm the input by clicking the button OK(O).

Deinstallation

Proceed as follows to uninstall the driver and the configuration program:

- ◆ Call up the deinstallation program with Start -> Programs -> Hama Wireless LAN -> Uninstall.
- ◆ Confirm the confirmation prompt with "Yes". The driver and the configuration program are uninstalled.

Troubleshooting

The following table will help you locate and remedy smaller failures:

Problem	Possible cause	Remedy
After installation and restart, no symbol appears in the Info section of the taskbar.	Error during installation.	Uninstall program and drivers and install again.
The WLAN USB stick is not recognised when inserted.	WLAN USB stick not inserted correctly.	Insert the WLAN USB stick correctly.
	The USB port is not functioning.	Test the USB port with another USB device. Reinstall the manufacturer's chipset driver.
The WLAN USB stick is recognised when inserted, but has only limited connectivity (Windows XP).	Wrong service pack installed.	Download the latest service pack (Version 2 or higher) from www.microsoft.com and install.
The WLAN USB stick is recognised when inserted, but no matching driver is found.	Error during installation.	Uninstall program and drivers and install again.
The desired peer is not shown in the list of available networks.	Peer not switched on.	Switch on peer.
	Peer out of range of the USB WLAN stick.	Reduce the distance or use a WLAN repeater.

Problem	Possible cause	Remedy
The peer to which a connection is to be made is shown in the list of available networks, but no connection can be made.	The profile settings are not correct.	<p>Check the following settings:</p> <ul style="list-style-type: none"> – Network name (SSID) correct? – Checkbox "Ad-hoc" correctly activated? – Network authentication correct? – Data encryption correct? – Network code correct (pay attention to capitalisation)?
The connection to the peer has been made, but folders or interfaced devices cannot be accessed.	The desired resource (folder, drive, printer or Internet connection) has not been enabled.	Enable the desired resource for sharing in the network. Information can be found in the 'Help' of the operating system.
Limited connectivity.	The network code is not correct.	Check the network code.
	No IP address allocated.	Automatic assignment of IP addresses is deactivated (DHCP server).
		The DHCP server has not yet completed the automatic allocation of the IP address (this can take several minutes).
		Set the IP address manually.
No data can be exchanged via an "ad-hoc" connection.	No IP address allocated.	See "Limited connectivity".
	Network code, work group or "ad-hoc" network name do not match.	Check the settings:
	Channel numbers do not match.	Set the correct channel numbers.

Problem	Possible cause	Remedy
Occasional faults occur in an "ad-hoc" connection.	Possible frequency interference from microwave ovens, DECT telephones, Bluetooth devices or other transmitters.	Change to another channel.

NOTE

- ▶ If you cannot resolve the problem with the steps described above, please contact Hama product support.

Support and contact information

For defective products

In the event of product complaints, please contact your dealer or the Hama product support.

Internet/World Wide Web

Product support, new drivers or production information can be found at www.hama.com.

Support hotline – Hama product support

Tel. +49 (0) 9091 / 502-115

Fax +49 (0) 9091 / 502-272

E-mail: produktberatung@hama.de

Technical data

USB port	USB Version 2.0 compatible with USB Version 1.1 (reduced data rate)
Supported standards	IEEE 802.11b (11 MBit/s) IEEE 802.11g (54 MBit/s) IEEE 802.11n (150 MBit/s)
Supported operating systems	Windows XP (SP2 or higher) Windows Vista (32-bit or 64-bit version) Windows 7 (32-bit or 64-bit version)
Frequency band	2.4 GHz
Encryption	WPA/WPA2/WEP 64 and 128 Bit
Displays	1 LED (connection/activity)
Antenna	Integrated antenna
Dimensions (LxWxH)	26 x 16 x 8 mm
Weight	approx. 4 g
Power supply	via USB; no external power supply required
Ambient temperature range (operation)	0 - 40 °C
Ambient temperature range (storage)	-25 - 65 °C
Relative humidity	max. 95% (non-condensing)

Notes on EC Declaration of Conformity

Hama GmbH & Co. KG hereby declares that this device is in compliance with the basic requirements and other relevant regulations of the 1999/5/EC guideline. You will find the declaration of conformity with R&TTE directive 99/5/EC on the internet at www.hama.com

Operation restrictions

This appliance may only be used indoors in France!



(D) Hinweis zum Umweltschutz:



Ab dem Zeitpunkt der Umsetzung der europäischen Richtlinie 2002/96/EG und 2006/66/EG in nationales Recht gilt folgendes: Elektrische und elektronische Altgeräte sowie Batterien dürfen nicht mit dem Hausmüll entsorgt werden. Der Verbraucher ist gesetzlich verpflichtet, elektrische und elektronische Geräte sowie Batterien am Ende ihrer Lebensdauer an den dafür eingerichteten, öffentlichen Sammelstellen oder an die Verkaufsstelle zurückzugeben. Einzelheiten dazu regelt das jeweilige Landesrecht. Das Symbol auf dem Produkt der Gebrauchsanleitung oder der Verpackung weist auf diese Bestimmungen hin. Mit der Wiederverwertung, der stofflichen Verwertung oder anderer Formen der Verwertung von Altgeräten/Batterien leisten Sie einen wichtigen Beitrag zum Schutz unserer Umwelt.

(GB) Note on environmental protection:



After the implementation of the European Directive 2002/96/EU and 2006/66/EU in the national legal system, the following applies: Electric and electronic devices as well as batteries must not be disposed of with household waste. Consumers are obliged by law to return electrical and electronic devices as well as batteries at the end of their service lives to the public collecting points set up for this purpose or point of sale. Details to this are defined by the national law of the respective country. This symbol on the product, the instruction manual or the package indicates that a product is subject to these regulations. By recycling, reusing the materials or other forms of utilising old devices/Batteries, you are making an important contribution to protecting our environment.

(F) Remarques concernant la protection de l'environnement:



Conformément à la directive européenne 2002/96/CE et 2006/66/CE, et afin d'atteindre un certain nombre d'objectifs en matière de protection de l'environnement, les règles suivantes doivent être appliquées: Les appareils électriques et électroniques ainsi que les batteries ne doivent pas être éliminés avec les déchets ménagers. Le pictogramme "picto" présent sur le produit, son manuel d'utilisation ou son emballage indique que le produit est soumis à cette réglementation. Le consommateur doit retourner le produit/la batterie usager aux points de collecte prévus à cet effet. Il peut aussi le remettre à un revendeur. En permettant enfin le recyclage des produits ainsi que les batteries, le consommateur contribuera à la protection de notre environnement. C'est un acte écologique.

(E) Nota sobre la protección medioambiental:



Después de la puesta en marcha de la directiva Europea 2002/96/EU y 2006/66/EU en el sistema legislativo nacional, se aplicara lo siguiente: Los aparatos eléctricos y electrónicos, así como las baterías, no se deben evacuar en la basura doméstica. El usuario está legalmente obligado a llevar los aparatos eléctricos y electrónicos, así como pilas y pilas recargables, al final de su vida útil a los puntos de recogida comunales o a devolverlos al lugar donde los adquirió. Los detalles quedaran definidos por la ley de cada país. El símbolo en el producto, en las instrucciones de uso o en el embalaje hace referencia a ello. Gracias al reciclaje, al reciclar del material o a otras formas de reciclaje de aparatos/pilas usados, contribuye Usted de forma importante a la protección de nuestro medio ambiente.

(NL) Notitie aangaande de bescherming van het milieu:



Ten gevolge van de invoering van de Europese Richtlijn 2002/96/EU en 2006/66/EU in het nationaal juridisch system, is het volgende van toepassing: Elektrische en elektronische apparatuur, zoals batterijen mag niet met het huisvuil weggegooid worden. Consumenten zijn wettelijk verplicht om elektrische en elektronische apparaten zoals batterijen op het einde van gebruik in te dienen bij openbare verzamelplaatsen speciaal opgezet voor dit doelende of bij een verkooppunt. Verdere specificaties aangaande dit onderwerp zijn omschreven door de nationale wet van het betreffende land. Dit symbol op het product, de gebruiksaanwijzing of de verpakking duidt erop dat het product onderworpen is aan deze richtlijnen. Door te recyclen, hergebruiken van materialen of andere vormen van hergebruiken van oude toestellen/batterijen, levert u een goede bijdrage aan de bescherming van het milieu.

(I) Informazioni per protezione ambientale:



Dopo l'implementazione della Direttiva Europea 2002/96/EU e 2006/66/EU nel sistema legale nazionale, ci sono le seguenti applicazioni: Le apparecchiature elettriche ed elettroniche e le batterie non devono essere smaltite con i rifiuti domestici. I consumatori sono obbligati dalla legge a restituire i dispositivi elettrici ed elettronici e le batterie alla fine della loro vita utile ai punti di raccolta pubblici preposti per questo scopo o nei punti vendita. Dettagli di quanto riportato sono definiti dalle leggi nazionali di ogni stato. Questo simbolo sul prodotto, sul manuale d'istruzioni o sull'imballo indicato che questo prodotto è soggetto a queste regole. Riciclando, ri-utilizzando i materiali o utilizzando sotto altra forma i vecchi prodotti/le batterie, darete un importante contributo alla protezione dell'ambiente.

(GR) Υπόδειξη σχετική με την προστασία περιβάλλοντος:



Από τη στιγμή που η Ευρωπαϊκή Οδηγία 2002/96/EE και 2006/66/EE ενσωματώνεται στο εθνικό δίκαιο ισχύουν τα εξής: Οι ηλεκτρικές και οι ηλεκτρονικές συσκευές καθώς και οι μπαταρίες δεν επιτρέπεται να πετιούνται στα οικιακά απορρίμματα. Οι καταναλωτές υποχρεούνται από τον νόμο να επιστρέφουν τις ηλεκτρικές και ηλεκτρονικές συσκευές καθώς και τις μπαταρίες στο τέλος της ζωής τους στα δημόσια σημεία περισυλλογής που έχουν δημιουργηθεί γι' αυτό το σκοπό ή στα σημεία πώλησης. Οι λεπτομέρειες ρυθμίζονται στη σχετική νομοθεσία. Το σύμβολο πάνω στο προϊόν, στο εγχειρίδιο χρήσης ή στη συσκευασία παραπέμπει σε αυτές τις διατάξεις. Με την ανακύκλωση, επαναχρησιμοποίηση των υλικών ή με άλλες μορφές χρησιμοποίησης παλιών συσκευών / Μπαταριών συνεισφέρετε σημαντικά στην προστασία του περιβάλλοντος. Στη Γερμανία ισχύουν αντίστοιχα οι παραπάνω κανόνες απόρριψης σύμφωνα με τον κανονισμό για μπαταρίες και συσσωρευτές.

(S) Not om miljöskydd:



Efter implementeringen av EU direktiv 2002/96/EU och 2006/66/EU i den nationella lagstiftningen, gäller följande: Elektriska och elektroniska apparater samt batterier får inte kastas i hushållsoporna. Konsumenter är skyldiga att återlämna elektriska och elektroniska apparater samt batterier vid slutet av dess livslängd till, för detta ändamål, offentlig uppsamlingsplats. Detaljer för detta definieras via den nationella lagstiftningen i respektive land. Denna symbol på produkten, instruktionsmanualen eller på förpackningen indikerar att produkten infettas av denna bestämmelse. Genom återvinning och återanvändning av material/batterier bidrar du till att skydda miljön och din omgivning.

(FIN) Ympäristönsuojelua koskeva ohje:



Siitä lähtien, kun Euroopan unionin direktiivi 2002/96/EU ja 2006/66/EU otetaan käyttöön kansallisessa lainsäädännössä, pätevät seuraavat määräykset: Sähkö- ja elektronikkalaitteita ja paristoja ei saa hävittää talousjätteen mukana. Kuluttajalla on lain mukaan velvollisuus toimittaa sähkö- ja elektronikkalaitteet niiden käyttöään päätyttyä niille varattuihin julkisiin keräyspisteisiin tai palauttaa ne myyntipaikkaan. Tähän liittyvistä yksityiskohdista säädetään kulloisenkin osavaltion laissa. Näistä määräyksistä mainitaan myös tuotteen symbolissa, käyttöohjeessa tai pakkaussessa. Uudelleen-käytöllä, materiaalien/paristojen uudelleenkäytöllä tai muilla vanhojen laitteiden uudelleenkäyttötavoilla on tärkeä vaikutus yhteisen ympäristömme suojelussa.



PL Wskazówki dotyczące ochrony środowiska:

Od czasu wprowadzenia europejskiej dyrektywy 2002/96/EU i 2006/66/EU do prawa narodowego obowiązują następujące ustalenia: Urządzeń elektrycznych, elektronicznych oraz baterii jednorazowych nie należy wyrzucać razem z codziennymi odpadami domowymi! Użytkownik zobowiązany prawnie do odniesienia zepsutych, zniszczonych lub niepotrzebnych urządzeń elektrycznych i elektronicznych do punktu zbiórki lub do sprzedawcy. Szczegółowe kwestie regulują przepisy prawne danego kraju. Informuje o tym symbol przekreślonego kosza umieszczony na opakowaniu. Segregując odpady pomagasz chronić środowisko!



H Környezetvédelmi tudnivalók:

Az európai irányelvek 2002/96/EU és 2006/66/EU ajánlása szerint, a megjelölt időponttól kezdve, minden EU-s tagállamban érvényesek a következők: Az elektromos és elektronikai készülékeket és az elemeket nem szabad a háztartási szeméthez dobni! A leselejtezett elektromos és elektronikus készülékeket és elemeket, akkumulátorokat nem szabad a háztartási szeméthez dobni. Az elhasznált és működésképtelen elektromos és elektronikus készülékek gyűjtésére törvényi előírás kötelez mindenkit, ezért azokat el kell szállítani egy kijelölt helyre vagy visszavinni a vásárlás helyére. A termék csomagolásán feltüntetett szimbólum egyértelmű jelzést ad erre vonatkozóan a felhasználónak. A régi készülékek begyűjtése, visszaváltása vagy bármilyen formában történő újra hasznosítása közös hozzájárulás környezetünk védelméhez.



CZ Ochrana životního prostředí:

Evropská směrnice 2002/96/EG a 2006/66/EU ustanovuje následující: Elektrická a elektronická zařízení stejně jako baterie nepatří do domovního odpadu. Spotřebitel se zavazuje odevzdat všechna zařízení a baterie po uplynutí jejich životnosti do příslušných zařízení. Podrobnosti stanoví zákon příslušné země. Symbol na produktu, návod k obsluze nebo balení na toto poukazuje. Recyklací a jinými způsoby využití přispíváte k ochraně životního prostředí.



SK Ochrana životného prostredia:

Európska smernica 2002/96/EU a 2006/66/EU stanovuje: Elektrické a elektronické zariadenia, rovnako ako batérie sa nesmú vyhadzovať do domáceho odpadu. Spotrebiteľ je zo zákona povinný zlikvidovať elektrické a elektronické zariadenia, rovnako ako batérie na miesta k tomu určené. Symbolizuje to obrázok v návode na použitie, alebo na balení výrobku. Opätovným využitím alebo inou formou recyklácie starých zariadení/baterií prispievate k ochrane životného prostredia.



P Nota em Protecção Ambiental:

Após a implementação da directiva comunitária 2002/96/EU e 2006/66/EU no sistema legal nacional, o seguinte aplica-se: Os aparelhos eléctricos e electrónicos, bem como baterias, não podem ser eliminados juntamente com o lixo doméstico. Consumidores estão obrigados por lei a colocar os aparelhos eléctricos e electrónicos, bem como baterias, sem uso em locais públicos específicos para este efeito ou no ponto de venda. Os detalhes para este processo são definidos por lei pelos respectivos países. Este símbolo no produto, o manual de instruções ou a embalagem indicam que o produto está sujeito a estes regulamentos. Reciclando, reutilizando os materiais dos seus velhos aparelhos/baterias, esta a fazer uma enorme contribuição para a protecção do ambiente.



RUS Охрана окружающей среды:

С момента перехода национального законодательства на европейские нормы 2002/96/EU и 2006/66/EU действительно следующее: Электрические и электронные приборы, а также батареи запрещается утилизировать с обычным мусором. Потребитель, согласно закону, обязан утилизировать электрические и электронные приборы, а также батареи и аккумуляторы после их использования в специально предназначенных для этого пунктах сбора, либо в пунктах продажи. Детальная регламентация этих требований осуществляется соответствующими местными законодательством. Необходимость соблюдения данных предписаний обозначается особым значком на изделии, инструкции по эксплуатации или упаковке. При переработке, повторном использовании материалов или при другой форме утилизации бывших в употреблении приборов Вы помогаете охране окружающей среды. В соответствии с предписаниями по обращению с батареями, в Германии вышеназванные нормы действуют для утилизации батарей и аккумуляторов.



TR Çevre koruma uyarısı:

Avrupa Birliği Direktifi 2002/96/EU ve 2006/66/EU ulusal yasal uygulamalar için de geçerli olduğu tarihten itibaren: Elektrikli ve elektronik cihazlarla piller normal evsel çöpe atılmamalıdır. Tüketiciler için, artık çalışmayan elektrikli ve elektronik cihazları piller, kamuya ait toplama yerlerine götürme veya satın alındıkları yerlere geri verme yasal bir zorunluluktur. Bu konu ile ilgili ayrıntılar ulusal yasalarla düzenlenmektedir. Ürün üzerinde, kullanma kılavuzunda veya ambalajda bulunan bu sembol tüketicileri bu konuda uyarır. Eski cihazların geri kazanımı, yapıldıkları malzemelerin değerlendirilmesi veya diğer değerlendirme şekilleri ile, çevre korumasına önemli bir katkıda bulunursunuz. Yukarıda adı geçen atık toplama kuralları Almanya'da piller ve aküler için de geçerlidir.



RO Instrucțiuni pentru protecția mediului inconjurător:

Din momentul aplicării directivelor europene 2002/96/UE în dreptul național sunt valabile următoarele: Aparatele electrice și electronice nu pot fi salubritate cu gunoial menajer. Consumatorul este obligat conform legii să predea aparatele electrice și electronice la sfârșitul duratei de utilizare la locurile de colectare publice sau înapoi de unde au fost cumpărate. Detaliile sunt reglementate de către legislația țării respective. Simbolul de pe produs, în instrucțiunile de utilizare sau pe ambalaj indică aceste reglementări. Prin reciclarea, revalorificarea materialelor sau alte forme de valorificare a aparatelor scoase din uz aduceți o contribuție importantă la protecția mediului nostru inconjurător.



DK Anvisninger til beskyttelse af miljøet:

Fra og med indførelsen af EU-direktiverne 2002/96/EF og 2006/66/EF i national ret gælder følgende: Elektrisk og elektronisk udstyr samt batterier må ikke bortskaffes sammen med almindeligt husholdningsaffald. Forbrugeren er lovmæssigt forpligtet til at aflevere udtjent elektrisk og elektronisk udstyr samt batterier til dertil indrettede, offentlige indsamlingssteder eller til forhandleren. De nærmere bestemmelser vedr. dette fastlægges af lovgivningen i det pågældende land. Symbolet på produktet, brugsvejledningen eller emballagen henviser til disse bestemmelser. Ved genbrug, genvinding eller andre former for nyttiggørelse af udtjent udstyr/batterier giver du et vigtigt bidrag til beskyttelse af miljøet.



N Informasjon om beskyttelse av miljøet:

Fra tidspunktet for omsetning av de europeiske direktivene 2002/96/EF og 2006/66/EF i nasjonal rett gjelder følgende: Elektriske og elektroniske apparater og batterier må ikke deponeres sammen med husholdningsavfallet. Forbrukeren er lovmessig forpliktet til å levere elektriske og elektroniske apparater og batterier til de offentlige samlestedene eller tilbake til stedet hvor produktene ble kjøpt. Detaljer angående dette reguleres av hvert land. Symbolet på produktet, bruksanvisningen eller emballagen henviser om disse bestemmelsene. Med resirkulering, gjenbruk av stoffer eller andre former av gjenbruk av gamle apparater/batterier bidrar du betydelig til å beskytte miljøet vårt.

<p>(D)</p>	<p>Dieses Gerät darf in Frankreich nur in geschlossenen Räumen verwendet werden! Hiermit erklärt Hama GmbH & Co. KG, dass sich dieses Gerät in Übereinstimmung mit den grundlegenden Anforderungen und den übrigen einschlägigen Bestimmungen der Richtlinie 1999/5/EG befindet. Die Konformitätserklärung nach der R&TTE Richtlinie 99/5/EG finden Sie unter www.hama.com</p>	<p>(H)</p>	<p>Ez a készülék csak zárt helyiségben működtethető Franciaországban! A Hama GmbH & Co. KG ezúton kijelenti, hogy a jelen készülék összhangban van az 1999/5/EK irányelv alapvető követelményeivel és az egyéb vonatkozó rendelkezésekkel. A 99/5/EK R&TTE irányelv szerinti megfelelőségi nyilatkozatot a www.hama.com címen találja meg.</p>
<p>(GB)</p>	<p>In France this device is only to be operated indoors! Hama GmbH & Co. KG hereby declares that this device is in compliance with the basic requirements and other relevant regulations of the 1999/5/EC guideline. You will find the declaration of conformity with R&TTE directive 99/5/EC on the internet at www.hama.com</p>	<p>(CZ)</p>	<p>Toto zařízení smí být ve Francii provozováno jen v uzavřených místnostech! Tímto firma Hama GmbH & Co. KG potvrzuje, že tento přístroj odpovídá základním požadavkům a ostatním relevantním předpisům směrnice 1999/5/ES. Prohlášení o shodě podle směrnice R&TTE 99/5/ES najdete na internetových stránkách www.hama.com</p>
<p>(F)</p>	<p>L'utilisation en France de cet appareil est autorisée exclusivement dans des locaux fermés. La société Hama GmbH & Co. KG certifie que cet appareil est conforme aux exigences de base et aux dispositions de la directive 1999/5/EC en vigueur. Vous trouverez la déclaration de conformité à la directive R&TTE 99/5/CE sur www.hama.com</p>	<p>(SK)</p>	<p>Toto zariadenie smie byť vo Francúzsku prevádzkované len v uzavretých miestnostiach! Spoločnosť Hama GmbH & Co. KG týmto prehlasuje, že tento prístroj zodpovedá základným požiadavkám a ostatným relevantným ustanoveniam Smernice 1999/5/ES. Vyhlásenie o zhode podľa smernice R&TTE 99/5/ES si môžete pozrieť na adrese www.hama.com</p>
<p>(E)</p>	<p>En Francia este aparato solo puede utilizarse en espacios cerrados. Mediante la presente, Hama GmbH & Co. KG declara que este aparato cumple con los requisitos básicos y los demás reglamentos relevantes de la directiva 1999/5/CE. La declaración de conformidad según la directiva R&TTE 99/5/CE la encontrará en www.hama.com</p>	<p>(P)</p>	<p>Em França, este aparelho apenas pode ser utilizado em espaços fechados! A Hama GmbH & Co. KG declara, deste modo, que este aparelho respeita as exigências básicas e restantes requisitos relevantes da directiva 1999/5/CE. Pode consultar a declaração de conformidade, segundo a directiva R&TTE 99/5/CE, em www.hama.com</p>
<p>(NL)</p>	<p>Dit toestel mag in Frankrijk alleen in droge en gesloten ruimtes gebruikt worden! Hiermee verklaart Hama GmbH & Co. KG, dat dit apparaat voldoet aan de vereisten en de overige relevante voorschriften van de richtlijn 1999/5/EG. De verklaring van overeenstemming conform de R&TTE-richtlijn 99/5/EG vindt u op internet onder www.hama.com</p>	<p>(RUS)</p>	<p>Во Франции эксплуатация изделия разрешается только в сухих, закрытых помещениях! Компания Hama GmbH & Co. KG настоящим подтверждает, что данное изделие полностью соответствует основным требованиям, а также предписаниям и положениям нормативов 1999/5/EG. Заявление о соответствии товара нормам R&TTE 99/5/EG см. на вебсайте www.hama.com</p>
<p>(I)</p>	<p>In Francia, questo apparecchio può essere utilizzato soltanto in locali chiusi! Hama GmbH & Co. KG dichiara che questo apparecchio soddisfa i requisiti fondamentali ed è conforme alle norme vigenti della direttiva 1999/5/CE. La dichiarazione di conformità secondo la direttiva R&TTE 99/5/CE è disponibile sul sito www.hama.com</p>	<p>(TR)</p>	<p>Bu cihaz sadece Fransa'da kuru ve kapalı mekanlarda çalıştırılmadık! Hama GmbH & Co. KG bu cihazın 1999/5/EC Direktif'i nin ilgili talimatlarına ve bu direktif tarafından istenen koşullara uygunluğunu beyan eder. R&TTE Direktif 99/5/EC'ye göre uygunluk beyanı için www.hama.com adresine bakınız.</p>
<p>(GR)</p>	<p>Στη Γαλλία αυτή η συσκευή επιτρέπεται να λειτουργεί μόνο σε κλειστούς χώρους. Η εταιρία Hama GmbH & Co. KG δηλώνει πως η συσκευή αυτή εκπληρώνει τις βασικές απαιτήσεις και τις λοιπές σχετικές διατάξεις της οδηγίας 1999/5/EK. Τη δήλωση συμμόρφωσης σύμφωνα με την οδηγία R&TTE 99/5/ΕΚ θα τη βρείτε στη διεύθυνση www.hama.com</p>	<p>(RO)</p>	<p>Acest aparat poate fi utilizat în Franța numai în încăperi închise! Hama GmbH & Co. KG, declară prin prezenta ca acest aparat este în conformitate cu cerințele esențiale și celelalte hotărâri relevante ale Directivei 1999/5/EC. Declarația de conformitate conform Directivei R&TTE 99/5/EC o găsiți în Internet la www.hama.com</p>
<p>(S)</p>	<p>I Frankrike får den här apparaten bara användas inomhus! Hama GmbH & Co. KG försäkras härmed att den här apparaten överensstämmer med de grundläggande kraven och övriga relevanta bestämmelser i direktivet 1999/5/EG. Försäkran om överensstämmelse enligt R&TTE-direktivet 99/5/EG hittar du på www.hama.com</p>	<p>(DK)</p>	<p>Denne anordning kan bruges i Frankrig kun i lukkede rum! Hama GmbH & Co. KG erklærer hermed, at dette apparat er i overensstemmelse med de grundlæggende krav og de øvrige, relevante bestemmelser i direktiv 1999/5/EF. Overensstemmelseserklæringen i henhold til direktivet om radio og teleterminaludstyr 99/5/EF kan du finde på www.hama.com</p>
<p>(FIN)</p>	<p>Laitetta saa Ranskassa käyttää vain suljetuissa tiloissa! Hama GmbH & Co. KG vakuuttaa täten, että tämä laite on direktiivin 1999/5/EY perusvaatimusten ja muiden oleellisten säännösten mukainen. Radio- ja telepäätelaitteita koskevan direktiivin 99/5/EY mukainen vaatimustenmukaisuusvakuutus löytyy osoitteesta www.hama.com</p>	<p>(N)</p>	<p>I Frankrike får dette apparatet kun brukes i lukkede rom! Med dette erklærer Hama GmbH & Co. KG at dette apparatet er i overensstemmelse med grunnleggende krav og relevante bestemmelser i direktiv 1999/5/EF. Du finner samsvarserklæringen i henhold til R&TTE-direktiv 99/5/EF under www.hama.com</p>
<p>(PL)</p>	<p>Urządzenia można we Francji użytkować tylko w zamkniętych pomieszczeniach! Hama GmbH & Co. KG oświadcza niniejszym, że urządzenie to spełnia podstawowe wymagania i pozostaje właściwie ustanowienia dyrektywy 1999/5/WE. Deklaracja zgodności wg dyrektywy 99/5/WE dotyczącej urządzeń radiowych i telekomunikacyjnych dostępna jest na stronie www.hama.com</p>		

hama
Hama GmbH & Co KG
D-86651 Monheim/Germany
www.hama.com

All listed brands are trademarks of the corresponding companies.

Errors and omissions excepted, and subject to technical changes. Our general terms of delivery and payment are applied.



00053331/09_10